

# GROUND EQUIPMENT



**REGBAR**  
CONSTRUCTION TECHNOLOGY SOLUTIONS

**NUT - WASHER - EYEBOLT**

## GROUND EQUIPMENT

# NUT - WASHER - EYEBOLT

### Properties

It contains different types of Nut & Washer Couplers. Regbar manufactures each coupler in accordance with the norms to facilitate your field application. You can contact us to be informed about various nuts, washers and eye bolts. Hexagon nuts, fibered nuts, wheel nuts, rail nuts, flange nuts, fly nuts, square nuts and nuts with rotating washer produced by Regbar conform to DIN 934, DIN 6915 ASME B18 2.2, EN ISO 4032, DIN 928, DIN 985, DIN 935, DIN 1587, EN ISO 4033, DIN 982 and DIN 980 standards.



Nut washer Eyebolt are designed to meet or exceed major international building codes and Department of Transportation requirements, including:

**DIN 934, DIN 6915 ASME B18 2.2, EN ISO 4032, DIN 928, DIN 985, DIN 935, DIN 1587, EN ISO 4033, DIN 982 and DIN 980**

### Detail

#### EYEBOLT

Certified eye bolts and ring bolts suitable to bear Eye Bolt Regbar Concrete blocks, concrete cylinders, machinery, equipment, template cages, precast concrete and suspension systems are produced in accordance with safety factors pursuant to DIN 580. If proper bolt assembly and lifting procedures are not performed, the loads may slip or fall.



#### HEADQUARTERS

Caferağa Mah. Albay Faik Sözdener Cad.  
 No:7/23 Kadıköy - İstanbul - TURKEY  
**Phone:** +90 216 405 21 55 pbx  
**E-mail:** info@regbar.com

#### PLANT

Sanayi Mah. İzmit Sanayi Sitesi  
 13. Cadde 318 Blok Apt. No: 318/132  
 No:9 İzmit - Kocaeli - TURKEY  
**Mobile:** +90 541 932 37 51

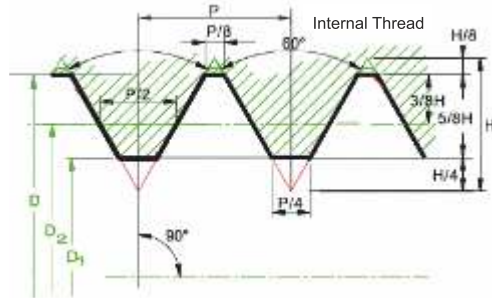
#### RUSSIA BRANCH

Lesnaya Plaza 4, 4th Lesnoy  
 Pereulok No: 24/8 125047  
 Moscow / RUSSIA



## NUT

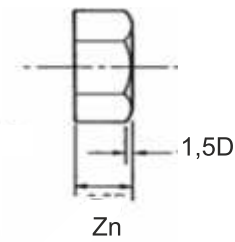
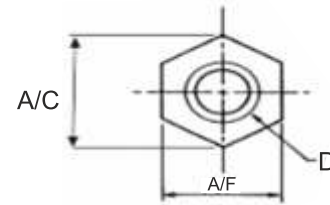
- ▶ Hexagon nuts
- ▶ Fiber nut
- ▶ The wheel nut
- ▶ Railway Rail Nuts
- ▶ Flanged nuts
- ▶ Butterfly nut
- ▶ Barrel Nuts



$$\begin{aligned}
 H &= 0,86603 P \\
 H/4 &= 0,21651 P \\
 H/8 &= 0,10825 P \\
 3/8 H &= 0,32476 P \\
 5/8 H &= 0,54127 P \\
 H/6 &= 0,14434 P = R \\
 0,613343 P &= H_3
 \end{aligned}$$

D = Major diameter (Int'l)  
 D<sub>2</sub> = Effective (Pitch) dia (Int'l)  
 D<sub>1</sub> = Minor diameter (Int'l)  
 h<sub>3</sub> = Full height of external thread

Nominal Size	Thread.	Nut Diameter		Nut Thick (Zn)	
		Pitch	Major (D)		Minor (D1) Max - min
M3	Nut tolerance class 6H are dimensioned n BS3692 Thread form to BS 3643	0,5	3	2,599 - 2,459	2,4
M4		0,7	4	3,422 - 3,242	3,2
M5		0,8	5	4,334 - 4,134	4
M6		1	6	5,153 - 4,917	5
M8		1,25	8	6,912 - 6,647	6,5
M10		1,5	10	8,676 - 8,376	8
M12		1,75	12	10,441 - 10,106	10
M16		2	16	14,210 - 13,835	13
M20		2,5	20	17,744 - 17,294	16
M24		3	24	21,252 - 20,752	19
M30		3,5	30	26,771 - 26,211	24
M36		4	36	32,270 - 31,670	29



- ▶ A falling load may lead to serious injuries or death.
- ▶ Regular Nut Eye Bolt G-291
- ▶ Inspection / Maintenance Safety:
- ▶ Always check the bolt before use.
- ▶ Never use a bolt that shows indications of wear or damage.
- ▶ Never use a bolt if the eye or stem is twisted or extended.
- ▶ Always ensure that the shaft and holes are threaded.



### HEADQUARTERS

Caferağa Mah. Albay Faik Sözdener Cad.  
 No:7/23 Kadıköy - İstanbul - TURKEY  
**Phone:** +90 216 405 21 55 pbx  
**E-mail:** info@regbar.com

### PLANT

Sanayi Mah. İzmit Sanayi Sitesi  
 13. Cadde 318 Blok Apt. No: 318/132  
 No:9 İzmit - Kocaeli - TURKEY  
**Mobile:** +90 541 932 37 51

### RUSSIA BRANCH

Lesnaya Plaza 4, 4th Lesnoy  
 Pereulok No: 24/8 125047  
 Moscow / RUSSIA



WASHER

Nominal Size		Washer Diameter		Washer Thickness
		Internal max - min	External max - min	Thickness max - min
M5	Black Washers are dimensioned in BS4320: 1968 For DIN125 Plain Washers (Overall dimensions) Din 125 Washer	5,8 - 5,5	10,0 - 9,2	1,2 - 0,8
M6		7,0 - 6,6	12,5 - 11,7	1,9 - 1,3
M8		9,4 - 9,0	17,0 - 16,2	1,9 - 1,3
M10		11,5 - 11,0	21,0 - 20,2	2,3 - 1,7
M12		14,5 - 14,0	24,0 - 23,2	2,8 - 2,2
M16		18,5 - 18,00	30,0 - 29,2	3,6 - 2,4
M20		22,6 - 22,0	37,0 - 35,8	3,6 - 2,4
M24		26,6 - 26,0	44,0 - 42,8	4,6 - 3,4
M30		33,8 - 33,0	56,0 - 54,5	4,6 - 3,4
M36		39,8 - 39,0	66,0 - 64,5	6,0 - 4,0
M42		45,8 - 45,0	78,0 - 76,5	8,2 - 5,8
M48		53,0 - 52,0	92,0 - 90,0	9,2 - 6,8



Regbar Construction Technology



**HEADQUARTERS**

Caferağa Mah. Albay Faik Sözdener Cad.  
No:7/23 Kadıköy - İstanbul - TURKEY  
Phone: +90 216 405 21 55 pbx  
E-mail: info@regbar.com

**PLANT**

Sanayi Mah. İzmit Sanayi Sitesi  
13. Cadde 318 Blok Apt. No: 318/132  
No:9 İzmit - Kocaeli - TURKEY  
Mobile: +90 541 932 37 51

**RUSSIA BRANCH**

Lesnaya Plaza 4, 4th Lesnoy  
Pereulok No: 24/8 125047  
Moscow / RUSSIA





# REGBAR

CONSTRUCTION TECHNOLOGY SOLUTIONS



[www.regbar.com](http://www.regbar.com)

[info@regbar.com](mailto:info@regbar.com)

#### HEADQUARTERS

Caferağa Mah. Albay Faik Sözdener Cad.  
No:7/23 Kadıköy - İstanbul - TURKEY

**Phone:** +90 216 405 21 55 pbx

**E-mail:** [info@regbar.com](mailto:info@regbar.com)

#### PLANT

Sanayi Mah. İzmit Sanayi Sitesi  
13. Cadde 318 Blok Apt. No: 318/132

No:9 İzmit - Kocaeli - TURKEY

**Mobile:** +90 541 932 37 51

#### RUSSIA BRANCH

Lesnaya Plaza 4, 4th Lesnoy  
Pereulok No: 24/8 125047

Moscow / RUSSIA